

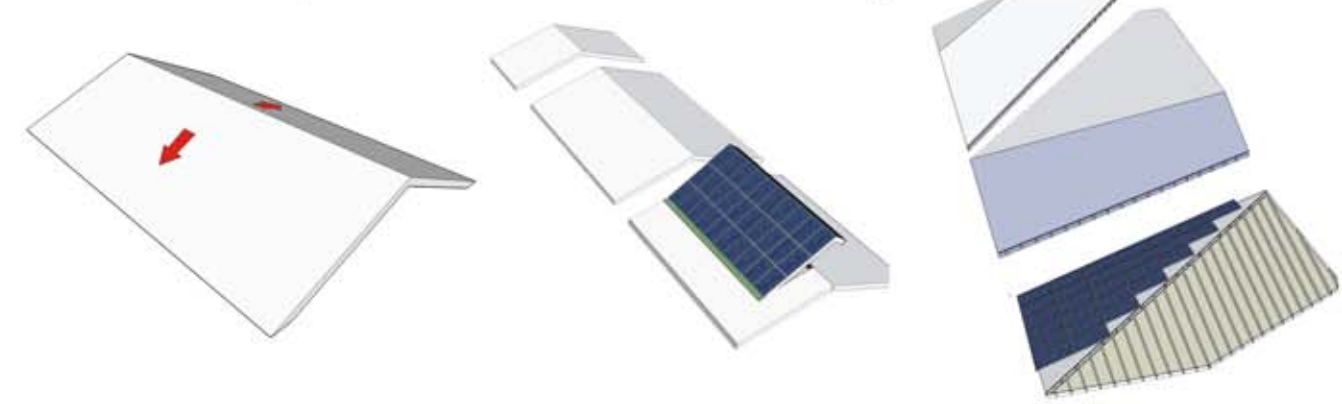


View from Back Garden



Design Concept

Our 'shogun 2', takes the notion of open space and circulation to new heights, by combining our trademark gestural entry stairs (of MIR 1) with a series of interconnecting decks and voids to define the 2 parts of the program, and create a more unique experience while moving seamlessly through indoor and outdoor spaces..... here we explore classic courtyard typologies where voids and landscape bring nature to be the heart of the home, and animate adjacent spaces and rooms. The key elements of this project are the roof-expressive bird like form, which is a re-interpretation of the classic gable roof to



demonstrate the dynamism which New Orleans represents, which is often expressed in the traditional building textures, color and wrought iron detail. Exterior wall finishes are panoply of color and material of wood siding, stucco/plaster and cement fiber boards used to create a harmonious balance of practicality and playfulness.

Design

Ground Floor

With 8ft headroom has been designed to be a seating area around a series of landscape zones, with gravel pathways leading to barbeque zone, seating area and elevator for the physically challenged.



constrüctsghana
'Inno-native'™ design + build



Street View



Interior View



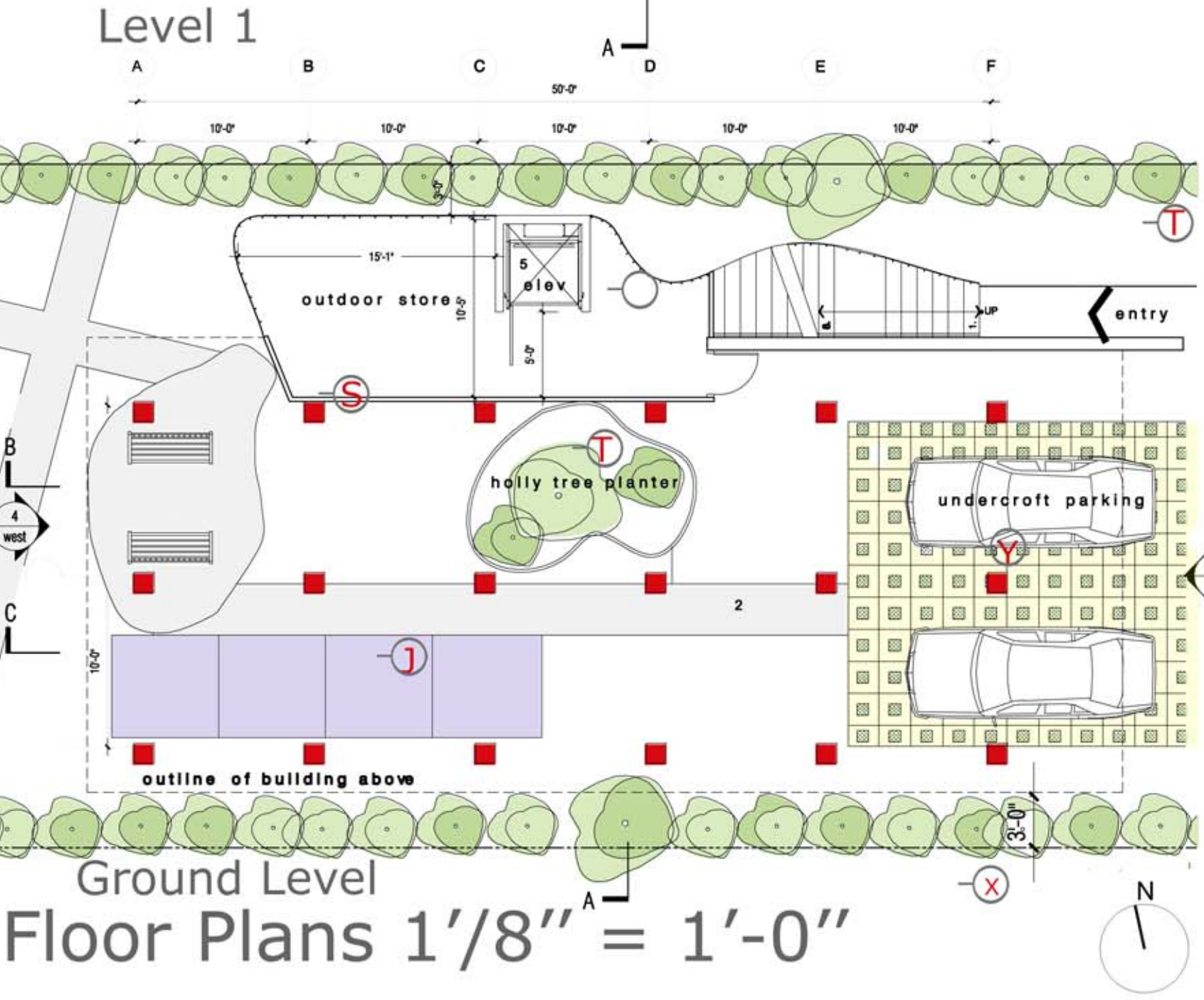
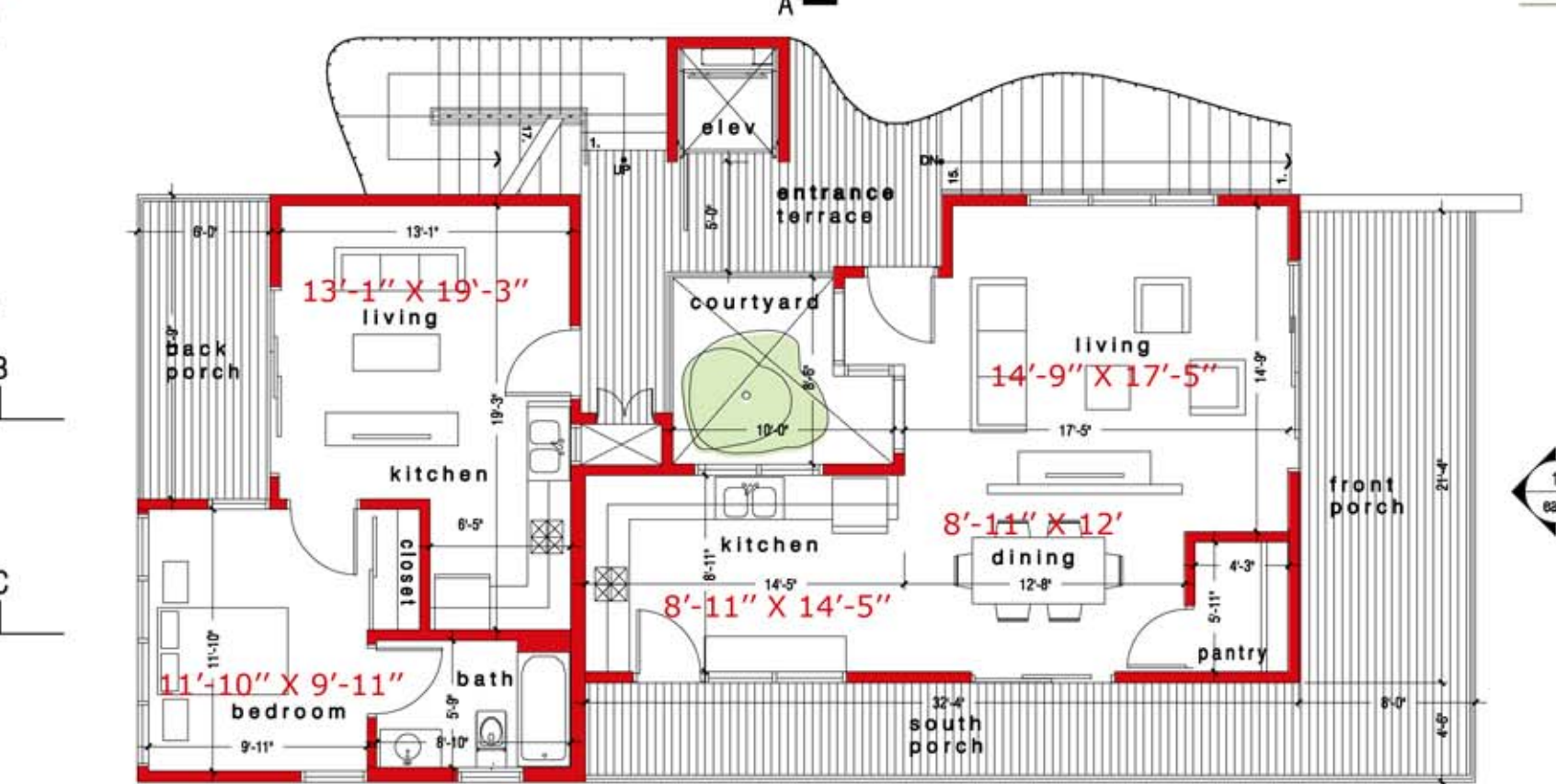
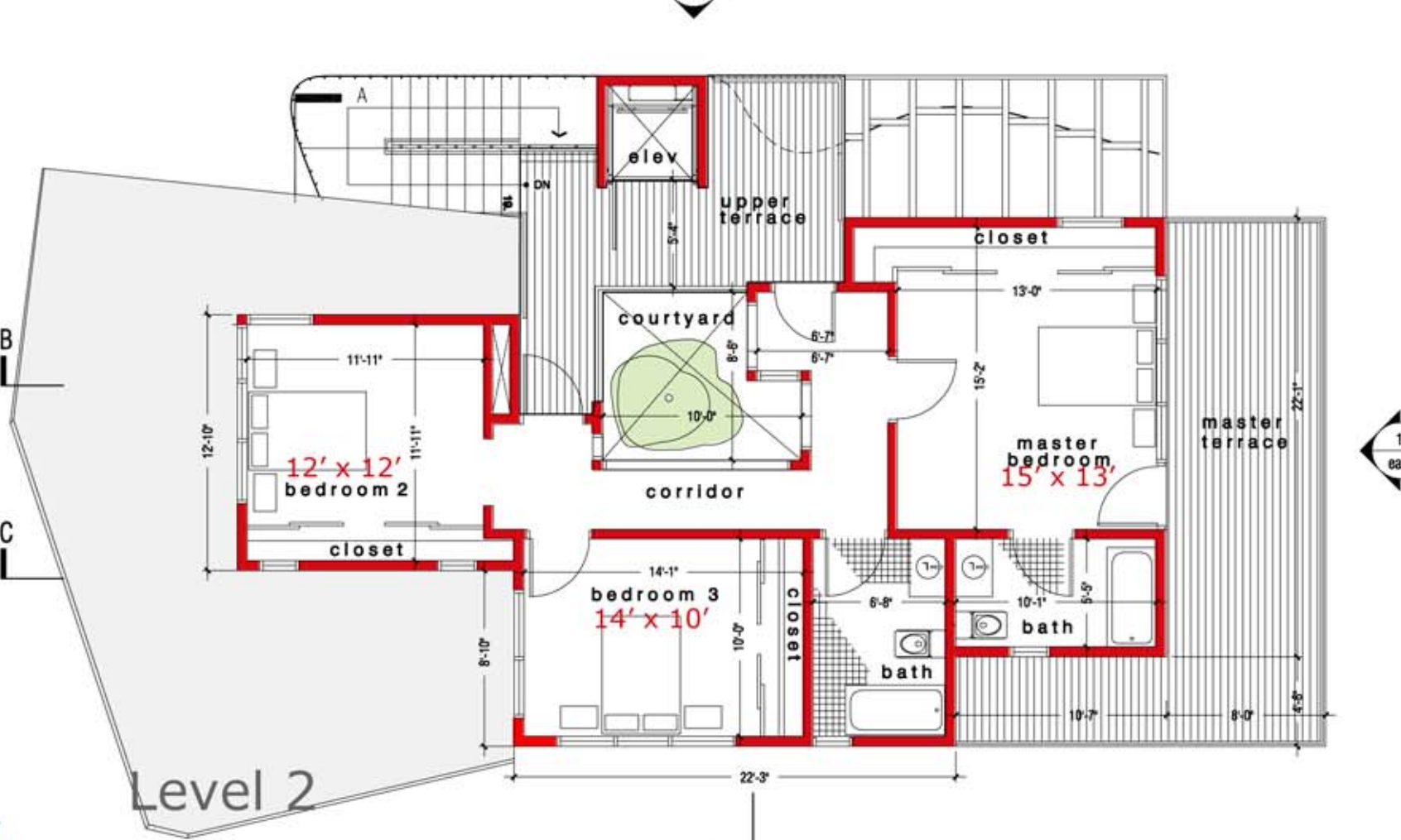
View of South West Corner



View to Entrance Stair

Project Data

- Internal Area**
- One Bedroom Unit = 418sqft
- Three bedroom Unit = 515sqft
- Internal Level 1 = 515sqft
- Internal Level 2 = 778sqft
- Total Internal = 1293sqft
- Total Internal Space = 1711sqft**
- External Area**
- Level 1 Terrace = 77sqft
- Main Terrace = 230sqft
- Kitchen Terrace = 135sqft
- Total Level 1 Area = 442sqft**
- Level 2 Main Upper Terrace = 700sqft
- Main Bedroom Terrace = 44sqft
- Total Level 2 Area = 744sqft**
- Total External Terrace = 1186sqft**



Entry stair goes up 9ft, along the 'nanny flat' and then to the deck which connects to the entry door of the main house. Wooden treads are held up by wood slats and steel rods on one end and a stone clad wall on the other with bench on the landing, this 'space' sets the tone of how outdoor spaces and voids play a critical role in shaping the design of this home. The rear of the house on level 1 has the 'nanny flat', which connects to main house via courtyard planted with native louisiana trees. The entry door of main house flanks this courtyard or 'heart' and is in the middle of the entire home. Living room, dining room and kitchen are organized around this sun-filled courtyard which has a tree growing through it. Open-able windows allow one to touch nature and get cross ventilation through the home, which would reduce the need for air-conditioning all year round. Decks off the kitchen complete the outdoor experience.

Level 2 is reached via 'jewel box' stair well, off the main living space. This proposed non-conditioned space consists of walls of vertical and horizontal glass louvers of different colors, which becomes an art piece or tapestry-like in itself. Reflections and shades of colors mark circulation vertically to level 3.

Level 3 is where the family can really enjoy the outdoors and congregate. The bedrooms all open up to the tree-filled courtyard void and the roof deck, protected by functional animated roof which brings in sun light via clear acrylic panels, directs water and supports solar panels. In this roof design, New Orleans' creativity, energy and renewal is captured in a form that speaks of protection, collection and connections.

Sustainable Solutions to us is not only in the technologies of solar and green product, but in the design itself, the use of voids to create cross ventilation, the importance of landscape in shaping a design philosophy inspired by how people want to live. It is not about edifice but interstitial spaces where families and communities can gather and share.

North Elevation



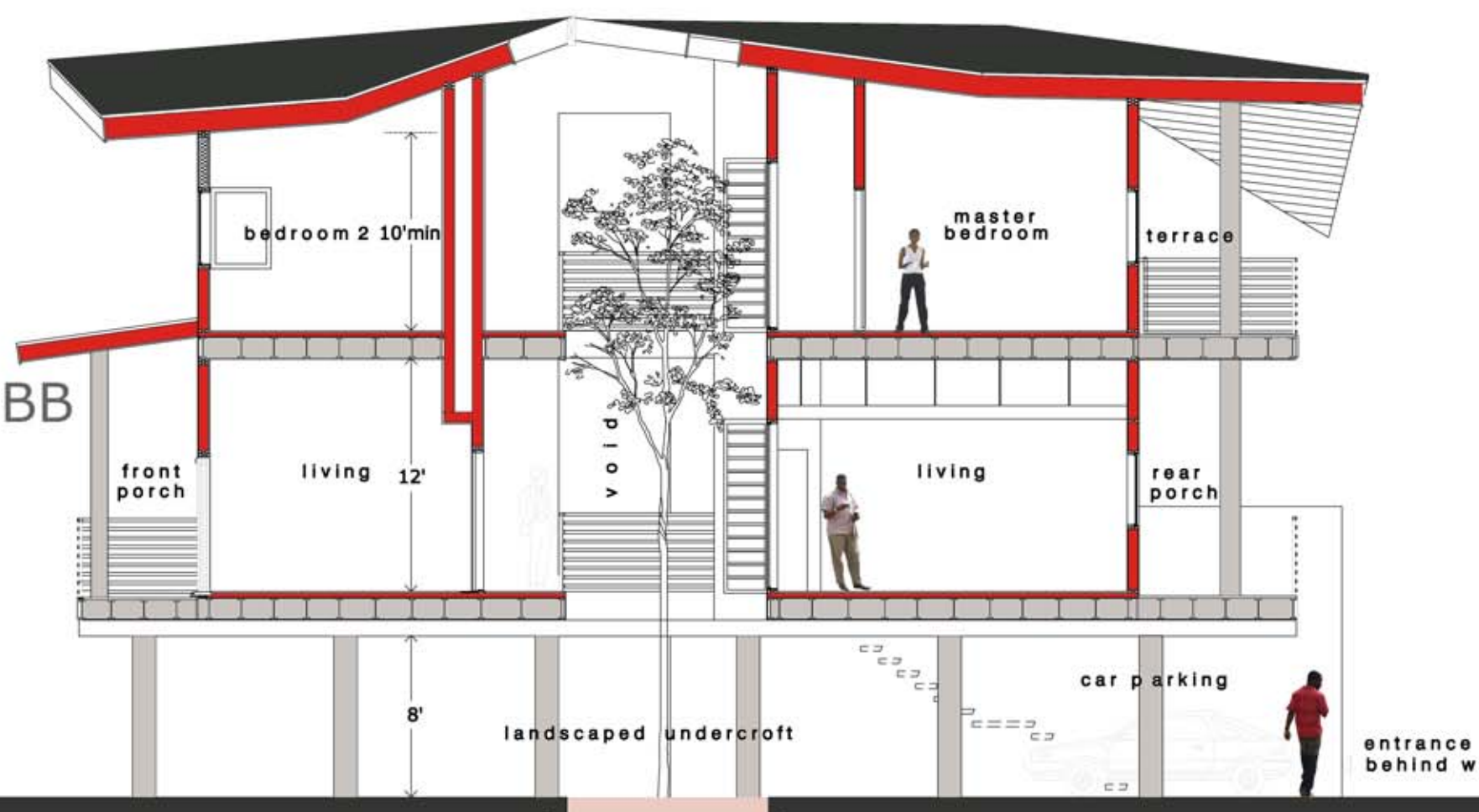
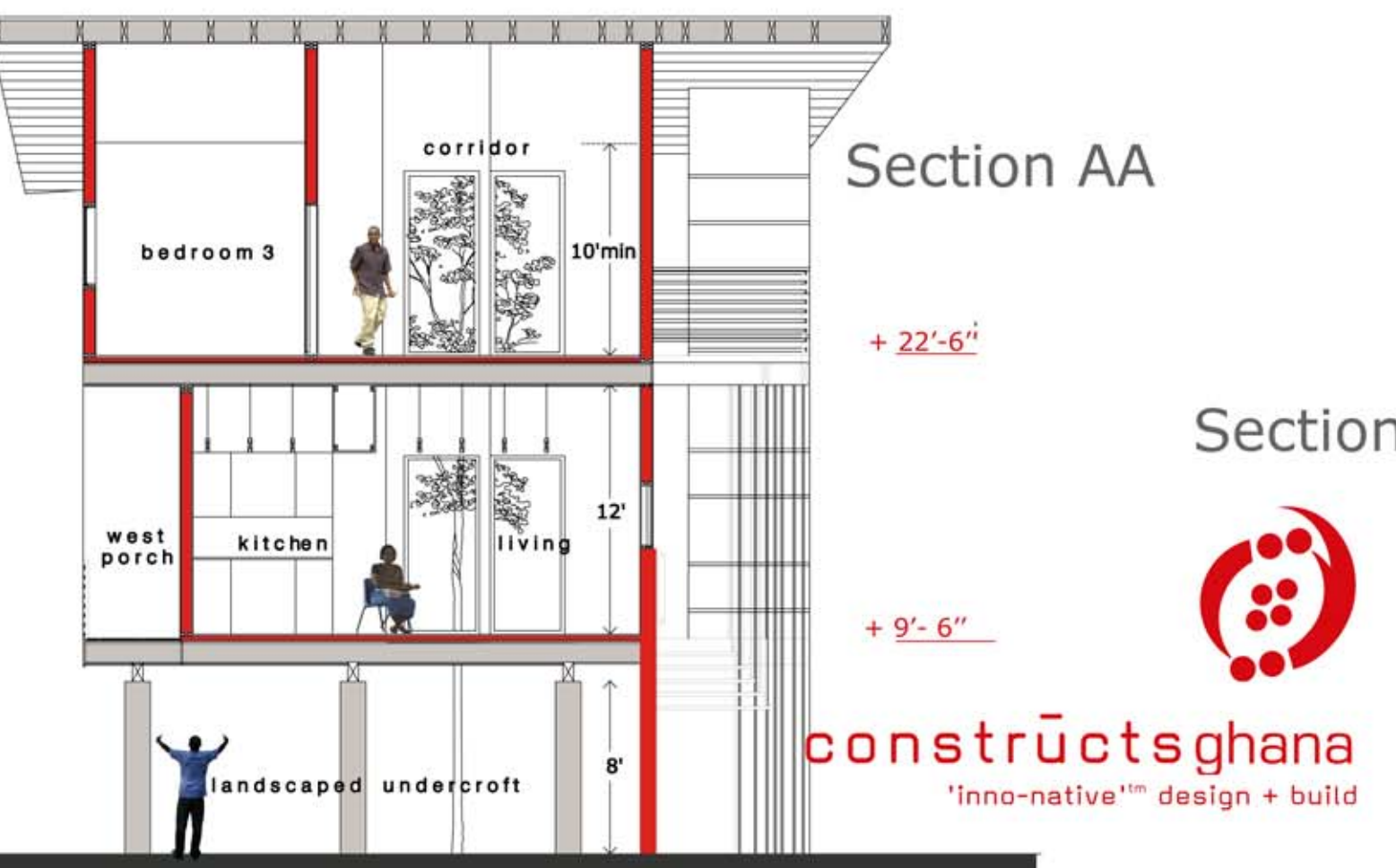
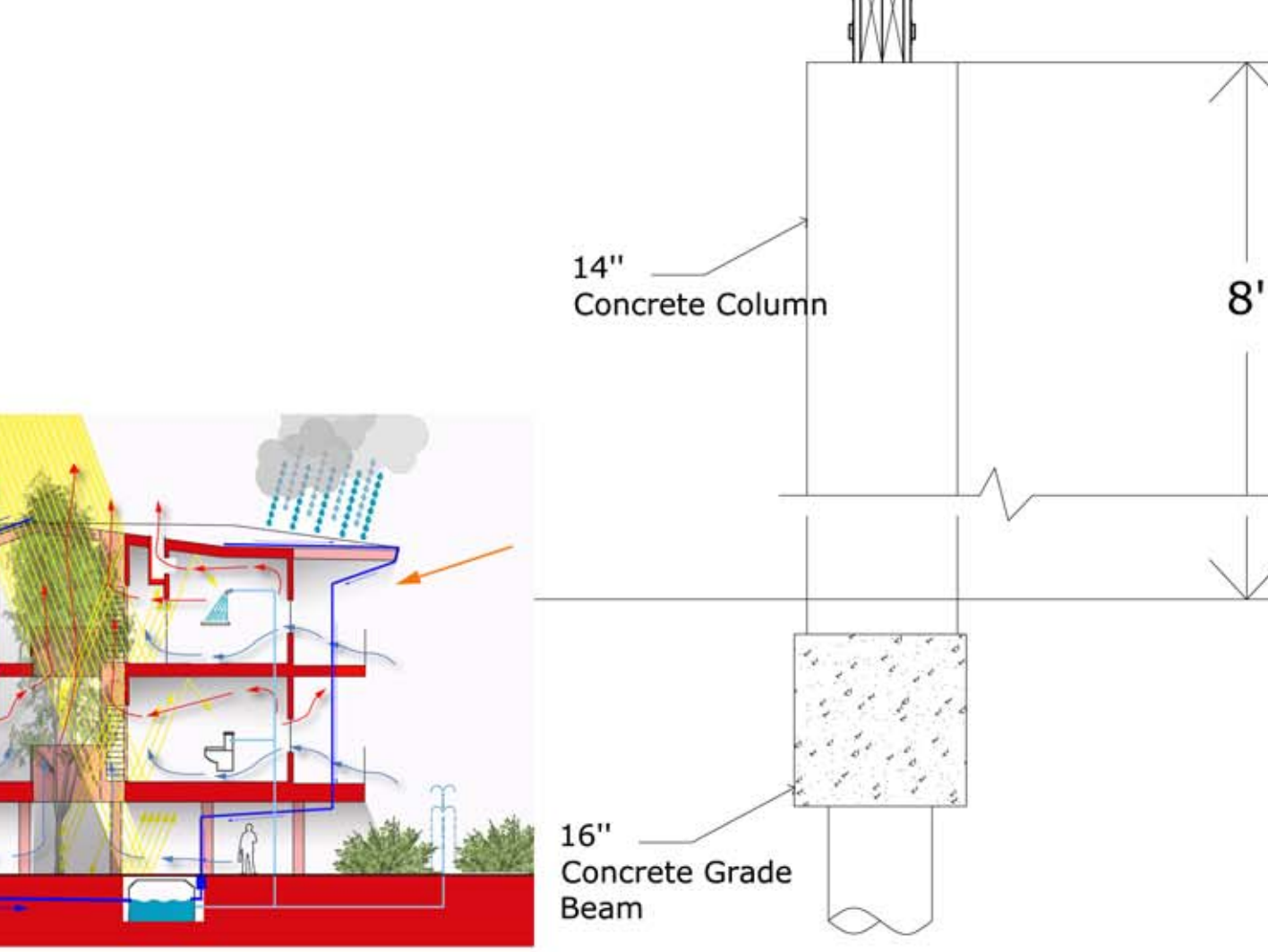
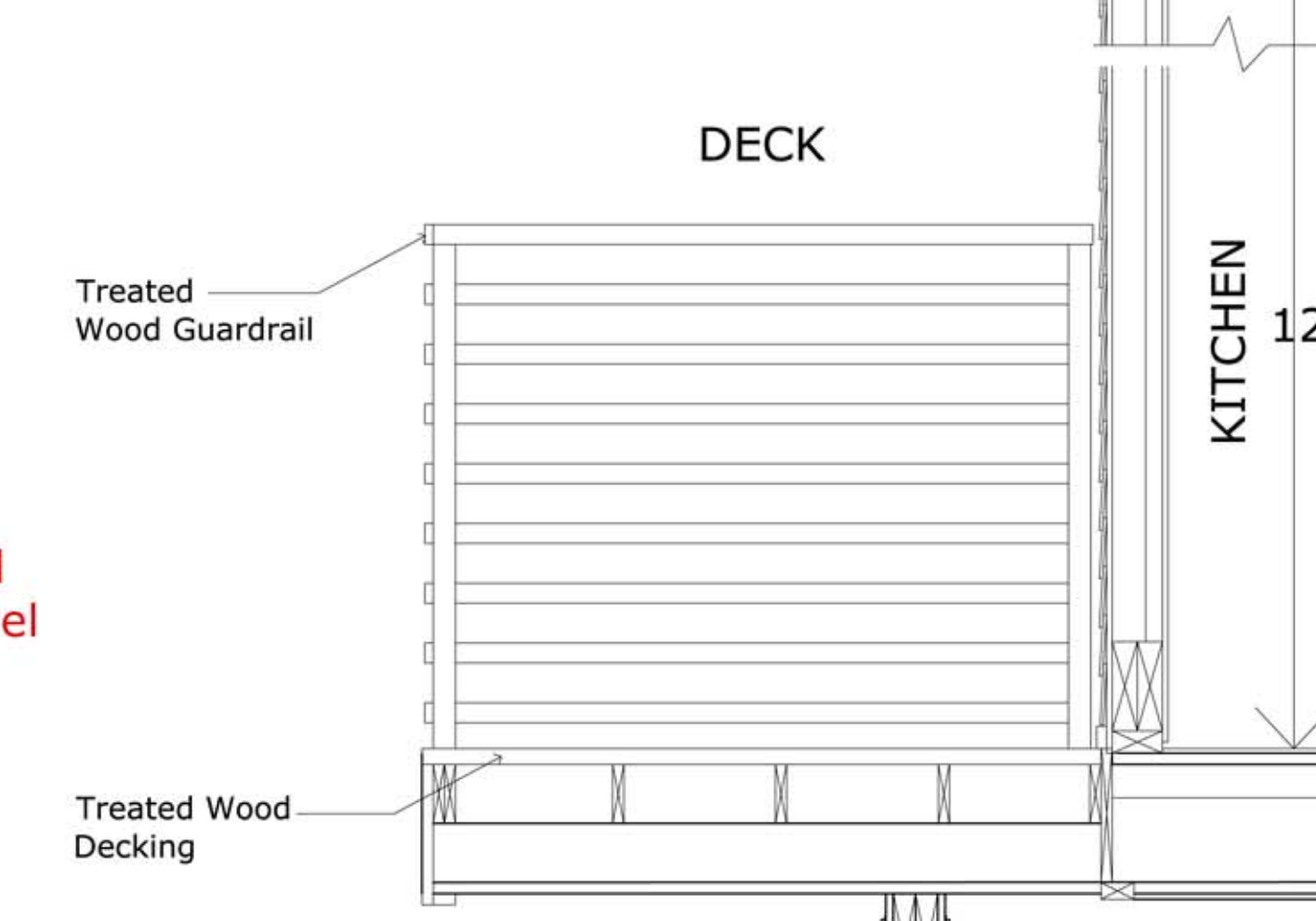
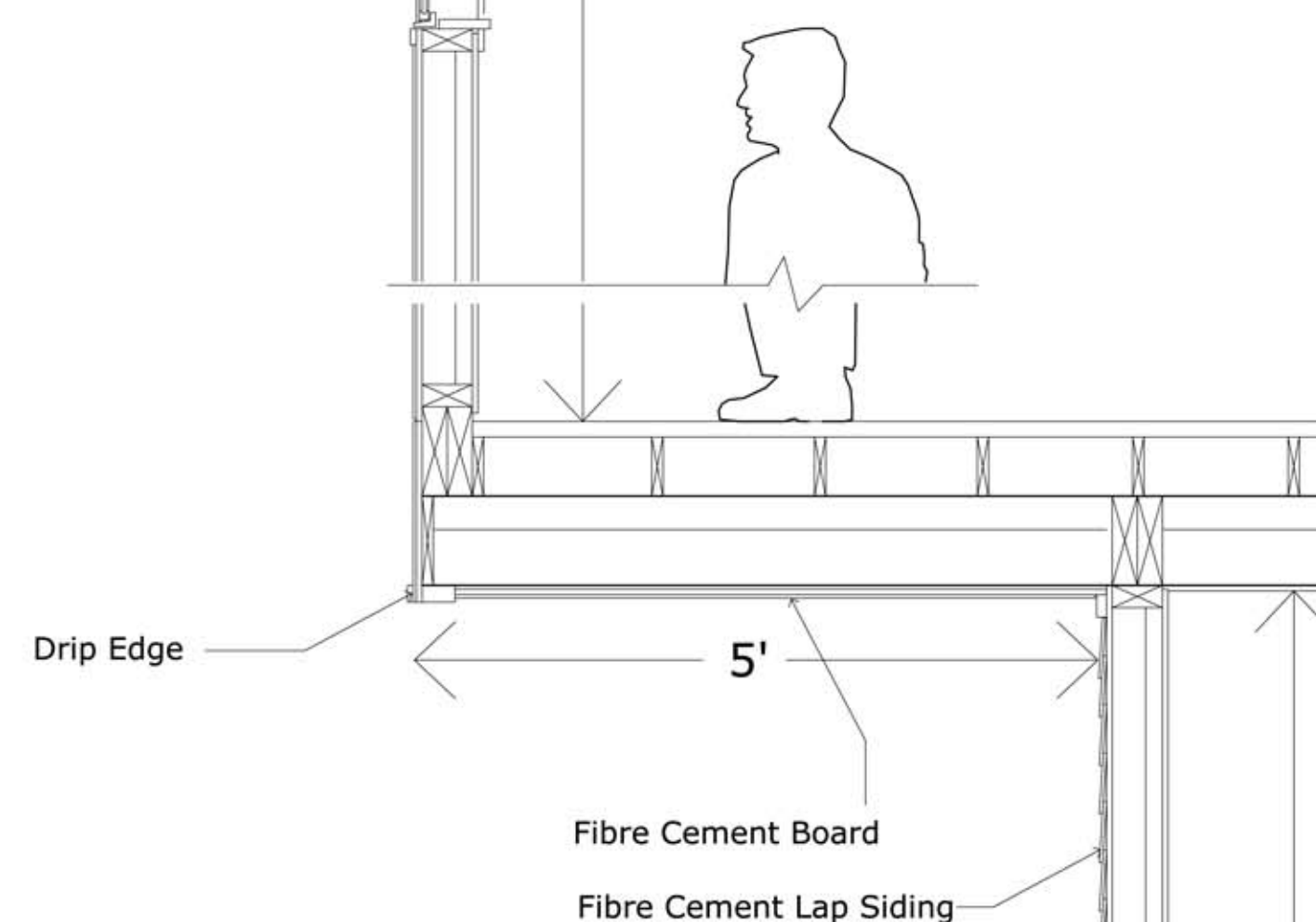
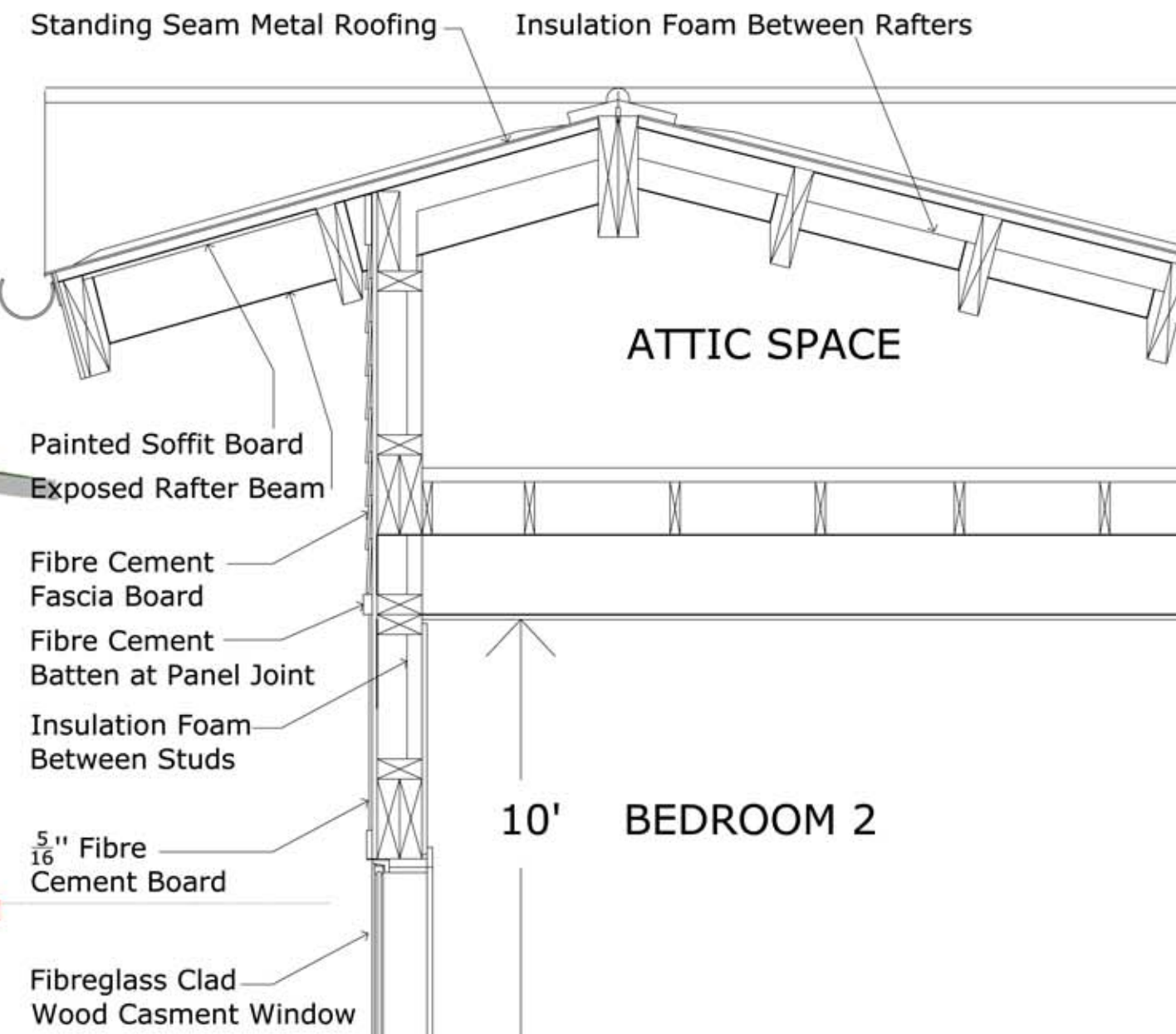
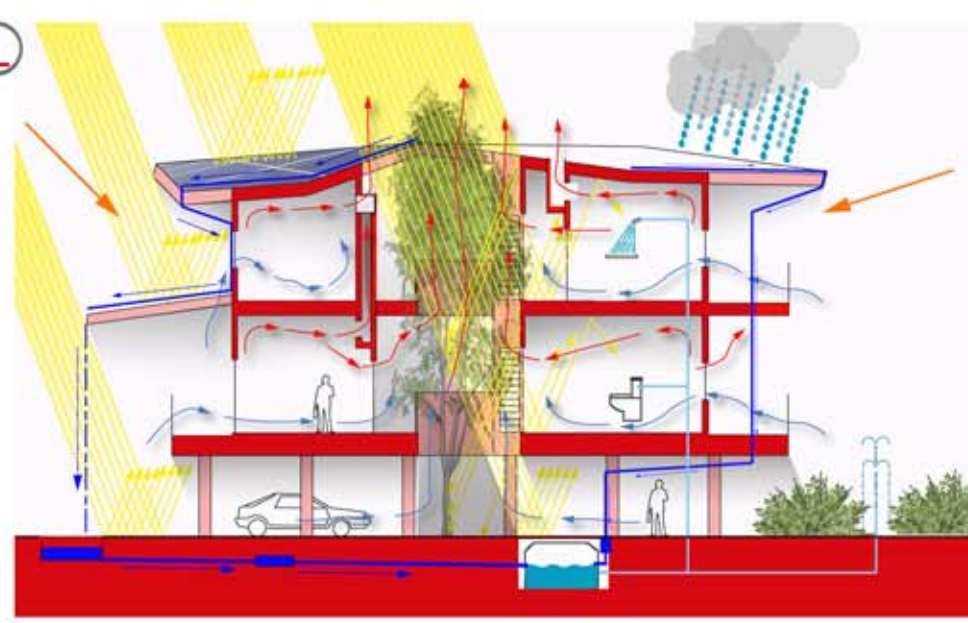
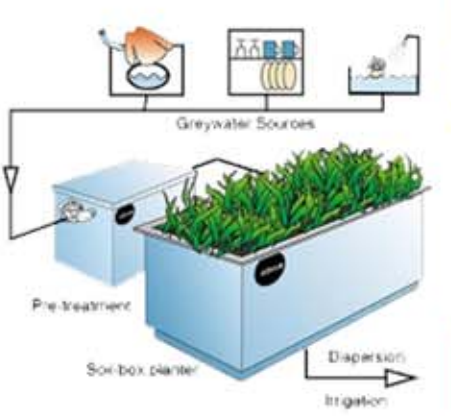
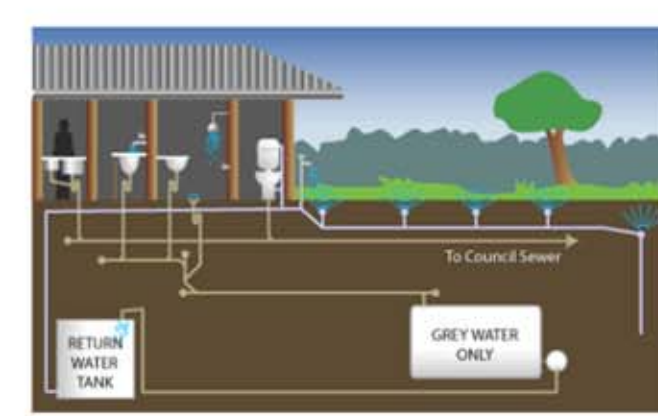
Elevations 1/8" = 1'-0"

Legend

- A - Fibre Cement Panels
- B - Fibre Cement Lap Siding
- C - Painted Fibre Cement Panels
- D - Solar Panels on Rack
- E - Painted Exposed Roof Member
- F - Galvanised Metal Flashing & Gutter
- G - Standing Seam Metal Roof
- H - Fibre Glass Clad Windows
- I - Concrete Wall
- J - Greywater Recycling
- K - Bamboo Screen
- L - Vertical Timber Screen/Balustrade
- M - Horizontal Timber Balustrade
- N - Cattle Fence 'Green Screen'
- O - Glazed Courtyard Well
- P - Treated Wooden Deck
- Q - Escape Platform
- R - Planter
- S - Gravel Walkway
- T - Pavers
- U - Metal Railings
- V - Ada Chair Lift
- W - Barbeque Grill
- X - Fence
- Y - Grass-Crete pavers
- Z - Wooden Support Slate

Room Legend

- 1 - One Bedroom Unit
- 2 - Lounge
- 3 - Dining
- 4 - Kitchen
- 5 - Terrace
- 6 - Bedroom 3
- 7 - Bedroom 2
- 8 - Main Bathroom
- 9 - Master Bathroom
- 10 - Master Bedroom



Buildings matter but experiences endure.

Sections 1/8" = 1'-0"

Building & Environmental Diagram

Wall Section AA 3/4" = 1'-0"

constrūctsghana
'Inno-native'™ design + build